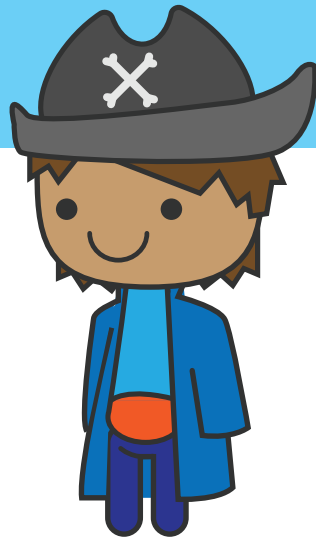


conversation captain

Leads the conversation.

Asks questions to keep
the conversation moving.



detail detective

Finds details in the text to
support the conversation.

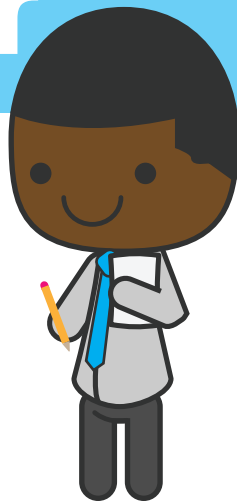
Serves as a fact-checker.



nifty note taker

Jots down important
ideas during discussions.

Reads back notes at the
end of discussions.

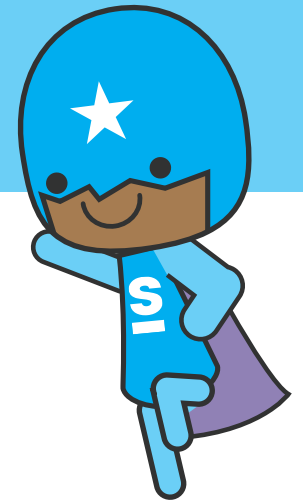


super speakers + listeners

All group members
assume this role.

Speak in turn.

Listen to others while they
speak.



setting



Describe the setting (time and place) of selection.

Use specific details from the text.

How does the setting contribute to the storyline?

sequence of events



Describe and sequence the important events of the selection.

Use specific details from the text.

point of view



What point of view is the selection told from?

What clues from the text show this point of view?

connections



What connections can you make between the two selections?

Provide details and examples.